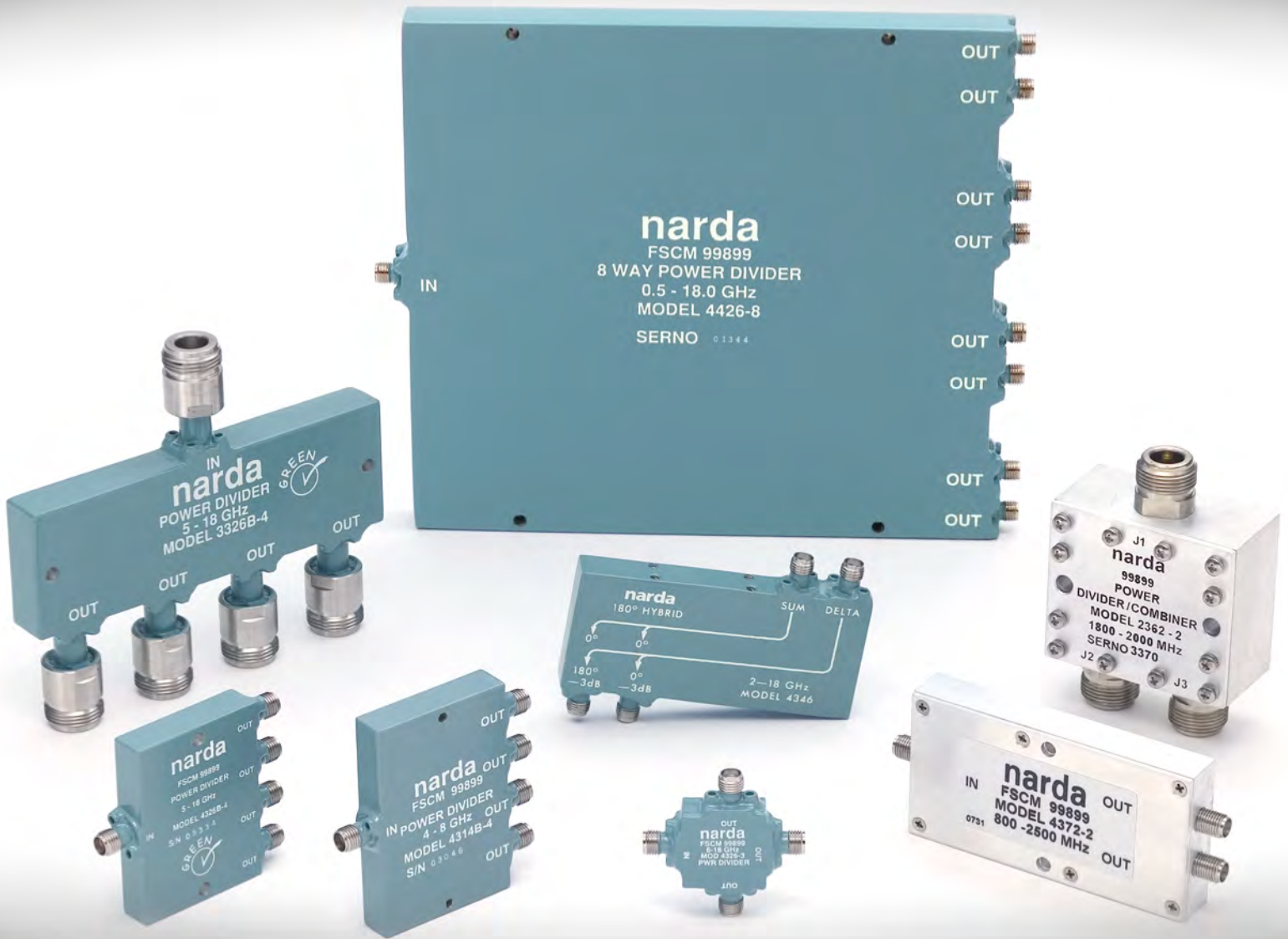


# POWER DIVIDERS & HYBRIDS



**narda**  
microwave-east

# Power Dividers and Hybrids

Adapters Attenuators Couplers    DC Blocks    Detectors    Isolators & Circulators    Phase Shifters    **Power Dividers and Hybrids**    Terminations (50 Ohm Loads)    Waveguide

## Quick Reference Guide

Very High Power Handling as Combiner with Two Non-Coherent Signals .....206  
 SMA (F) 3-Way Divider 2-6 GHz 1 Watt.....208  
 SMA (F) 3-Way Divider 6-18 GHz 1 Watt.....210  
 2.92mm (F) 2-Way/4-Way 10 to 45 GHz.....212  
 SMA (F) and 2.92mm (F) 2-Way/4-Way 0.5 to 33 GHz 30 Watt (Multi-Octave).....214  
 SMA (F) and 2.92mm (F) 2-Way 0.5 to 26.5 GHz 30 Watt (Octave Band) .....221  
 SMA (F) and 2.92mm (F) 4-Way 0.5 to 26.5 GHz 30 Watt (Octave Band) .....224  
 Type N (F) 2-Way 2 to 18 GHz 30 Watt (Multi-Octave).....227  
 Type N (F) 4-Way 2 to 18 GHz 30 Watt (Multi-Octave).....229  
 SMA (F) 2-Way/4-Way/8-Way 0.5 to 18 GHz 30 Watt (Ultra-Broadband).....231  
 SMA (F) 2-Way/4-Way/8-Way 0.5 to 6 GHz 30 Watt (Ultra-Broadband).....235  
 SMA (F) 2/3/4/8 Way 0.5 GHz to 8 GHz 0.5 Watt (Broadband, Commercial) .....239  
 SMA (F), Type N - 2-Way 6 to 18 GHz (High Power).....243  
 90-Degree 0.25 to 16 GHz (Mini Hybrids) .....245  
 90-Degree SMA (F) 6 to 18 GHz 125 Watt (High Power).....248  
 90-Degree SMA (F) 2 to 18 GHz 30 Watt (Ultra-Broadband).....250  
 180-Degree SMA (F) 2 to 18 GHz 30 Watt (Ultra-Broadband).....252  
 90-Degree SMA (F) .5 to 8 GHz 30 Watt (Multi-Octave) .....254  
 90-Degree SMA (F) 2 to 18 GHz 30 Watt (Multi-Octave) .....256  
 180-Degree SMA (F) 2 to 8 GHz 30 Watt (Multi-Octave) .....258  
 90-Degree Type N (F) 0.82 to 4.2 GHz (High-Power) .....260  
 Type N (F) 0.8 to 2.0 GHz 80W/100W (High Power Combiners Wireless Bands) .....263  
 Type N (F) 0.8 to 2.5 GHz 30 Watt (Wireless Applications) .....268  
 SMA (F) 0.8 to 2.5 GHz 30 Watt (Wireless Applications) .....271

Frequency Range (GHz)	Connector	Model No.
Power Dividers		
10-45	2.9 mm	4428C
18-40	2.9 mm	4318
10-33	2.92 mm	4328B
2.0-26.5	2.92 mm	4327C
18-26.5	2.92 mm	4317
0.5-18	SMA	4426
2-18	Type N	3456
2-18	SMA	4456
0.5-6	SMA	4426LB
5-18	SMA	4326B
6-18	SMA	4096
6-18	SMA	4306
6-18	SMA	4326
12-18	SMA	4316
8-12.4	SMA	4315
2-8	SMA	4324
2-8	Type N	3324
2-6	SMA	4323
4-8	SMA	4314

Frequency Range (GHz)	Connector	Model No.
6-8	Type N	3326B
2-4	SMA	4313
0.8-2.2	SMA	4325
0.5-8.0	SMA	4436
0.5-2.5	SMA	4322
0.5-2.0	SMA	4321
1-2	SMA	4312
0.5-1.0	SMA	4311
Low-Cost Power Dividers		
0.8-1.0	SMA	4152
8-2.5	Type N	3372A
0.8-2.5	SMA	4372A
1.9-2.5	SMA	4162
Hybrids		
2-18	SMA	4356B
2-18	SMA	4346
6-18	SMA	4336
6-18	SMA	4096
7.5-16	SMA	4065
2-8	SMA	4333

# Power Dividers and Hybrids

Adapters Attenuators Couplers DC Blocks Detectors Isolators & Circulators Phase Shifters **Power Dividers and Hybrids** Terminations (50 Ohm Loads) Waveguide

Frequency Range (GHz)	Connector	Model No.
2-8	SMA	4343
4-8	SMA	4034C
1.7-4.2	Type N	3033B
2-4	SMA	4033C
0.5-8	SMA	4358
0.820-0.980	Type N	3322
0.95-2.0	Type N	3032
1-2	SMA	4032C
0.5-1.0	SMA	4031C
0.25-0.5	SMA	4030C

## Introduction

Traditionally, both coupled-line 3 dB couplers and in-phase Wilkinson dividers have been used for power dividing and combining. For a given application, however, the differences between the two make one type more desirable than the other.

## 90° Hybrids

A 90° Hybrid (Hybrid Junction) is a network having the electrical characteristics of a 3 dB directional coupler whose branch line is not terminated. The four terminal network can be considered to have two pairs of terminals called conjugate pairs. In most packages, each conjugate pair is located on either side of the device (Figure 1). The two terminals that make up the conjugate pair are isolated from each other. Therefore, power flowing into one terminal of the pair does not appear at its conjugate, but is equally divided between the terminals of the opposite conjugate pair. When used as a power divider, any one of the four terminals can be used as the input. With the conjugate port of the input terminated in 50 ohms, the two outputs at the opposite conjugate pair will be of equal amplitude and in quadrature (90° apart in phase).

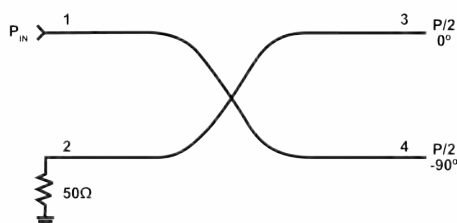


Figure 1 Multi-Octave Hybrid, Ports 1 & 2 Comprise a Conjugate Pair, Ports 3 & 4 Comprise a Conjugate Plan

The primary advantage of the hybrid junction is its power handling capability. Since the isolated port (conjugate of the input port) is terminated externally, the only limitations to power handling are heat generated by the internal dissipation losses and the power handling capability of the external termination. As stripline losses are typically low, hybrid junctions can be designed to handle up to 500 Watts average power in special versions. Another advantage of the hybrid junction is that it maintains its quadrature relationship over the full operating frequency range of the device. This characteristic is highly desirable in Polar Frequency Discrimination and Circularly Polarized antenna circuits.

## 180° Hybrids

A signal applied to the sum port of the 180° hybrid provides output signals of equal amplitude and phase at the output ports. A signal applied to the delta port provides output signals of equal amplitude but 180° out of phase with each other (Figure 2). Narda Broadband 180 Degree Hybrids are ideal for use as power dividers, combiners, balanced mixers, image rejection mixers, antenna feed networks, matrix amplifiers and switching networks.

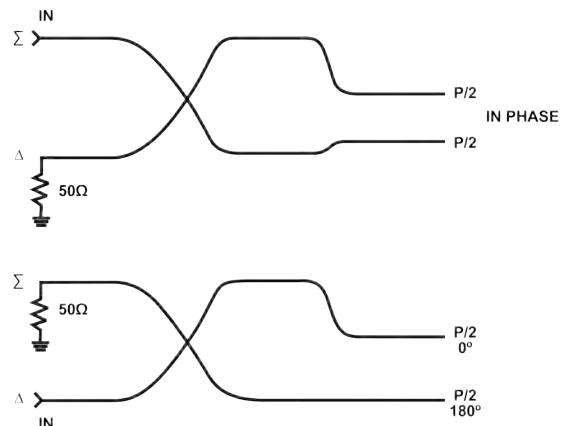


Figure 2 Signal Flow Diagram 180° Hybrid

## In-Phase Power Divider

An in-phase Wilkinson power divider is a network with one input and N outputs equal in amplitude whose phase relationship is zero degrees. In some applications, such as phased arrays and certain EMC interferometer receiving systems, this characteristic is a necessity.

## Power Dividers and Hybrids

Adapters Attenuators Couplers DC Blocks Detectors Isolators & Circulators Phase Shifters **Power Dividers and Hybrids** Terminations (50 Ohm Loads) Waveguide

A distinct advantage of the in-phase power divider is its superior amplitude balance when compared to the amplitude balance of a hybrid junction. Examples which take advantage of this superior performance are illustrated in Figures 3 and 4. Since the output ports track so closely, one port of the divider is fed back to the swept signal generator to provide a very flat amplitude response at the point of measurement.

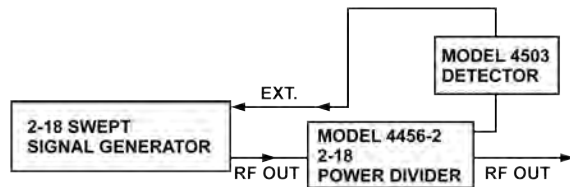


Figure 3. An example using a power divider in a leveling loop application requiring superior amplitude and phase balance.

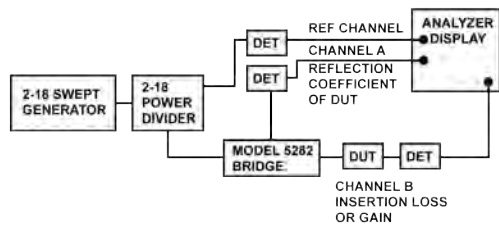


Figure 4. A ratio measurement system is an example in the use of the excellent tracking characteristics of the divider in a ration measurement system.

As the output ports of the divider are identical, and one of these outputs is used to provide amplitude correction information to the swept generator, the ideal case provides a constant RF output level to the unit under test. When this is the case, measurement of reflection coefficient and insertion loss of a device may be made with a swept signal generator in the unlevelled mode. Any inadvertent variation of the power output control of the swept signal generator would have no effect on the measurement. (It should be noted, however, that in both of the cases depicted in Figures 3 and 4, there is a nominal 3dB power loss of the input signal).

### Using Hybrids and In-Phase Power Dividers as Power Combiners

Both the in-phase power divider and the hybrid junction can be used as power combiners. If the relationship of the input signals when the device is used as a combiner is the same as the relationship of the output signals present when the device is used as a divider, there is a minimal power loss through the device. For example, a 90° hybrid with equal amplitude signals in quadrature placed on the inputs to one conjugate pair will result in no signal at one of the terminals of the opposite conjugate pair and the

sum of the signals at the other terminal. Due to the fact that the inputs, when used as a combiner, were at the same relationship as the outputs would have been if the device was used as a divider (one signal in, two signals out at equal amplitude 90° apart) the power loss is minimal. In other cases, the combination losses will vary with the relationship of the signals, and the combined power level achieved in combination will be degraded.

In a similar manner, the in-phase power divider can be used as a power combiner. In this case, however, as the power handling capability of the in-phase power divider is limited by the power handling capability of the internal resistor(s) of the device, the input power level of each of the combined signals must not exceed 1W/N watts ( where N is the number of inputs). For example, when using a 4-way power divider as a combiner, the maximum power level into each of the output ports of the divider cannot exceed 0.25 Watts or 1W/N=4. If, however, the input signals are phase and amplitude coherent (same frequency, equal amplitude), the internal resistor of the in-phase power divider does not dissipate energy, and the power level of the inputs can be as high as the full-rated power used as a divider, divided by N. ( In this example, a 4-way device rated as a divider at 50 Watts, could handle 4 signals of 12.5 Watts if the signals were frequency- and amplitude-coherent).

In applications for the combination of 2 or more transmit signals into single antenna communications networks, Narda does provide designs that can handle multiple signal inputs at elevated RF power levels. Power level handling, where the sum of the input signal power of each of the input ports closely matches the maximum forward power when used as a divider, is readily achievable with the proper resistor selection. Using this design approach, custom broadband high frequency devices, as well as narrow band products geared toward the cellular markets, are available.

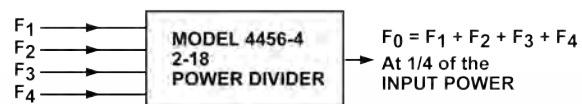


Figure 5. Illustrates the use of the divider as a combiner. See page 40 for expanded illustration.

### General Definitions

Since performance characteristics of in-phase power dividers are specified in a number of ways, the following definitions of terms are applicable to all

# Power Dividers and Hybrids

Narda in-phase power dividers that appear in this catalog.

**Frequency** - The frequency range over which the power divider must meet specifications listed.

**Amplitude Balance** - The maximum peak to peak amplitude difference in dB between the output ports of the power divider over the specified frequency range.

**Phase Balance** - The maximum peak-to-peak difference in phase, in degrees, between the output ports of the power divider over the specified frequency range.

**Isolation** - The difference in dB that the signal level measured at one output port is below the signal level into the adjacent output port, with the input port terminated in 50 ohms. Isolation is measured between adjacent ports since this is the most severe condition.

**VSWR, Input** - The maximum VSWR of the power divider over its specified frequency range, looking into the common port, with all other ports terminated in 50 ohms.

**VSWR, Output** - The maximum VSWR of the power divider over its specified frequency range, looking into any one of the output ports with all other ports terminated in 50 ohms.

**Insertion Loss** - The ratio in dB of the net difference between the power input and the sum of the output power expressed as:

$$\text{Insertion Loss} = 10_{\log} \frac{P_1 + P_2 + \dots + P_n}{P_{\text{input}}}$$

**Average Power** - The maximum power that may be applied to the common or input port with the output ports terminated in a load with the VSWRs listed.

**NOTE:** For applicable Narda Power Dividers and Hybrids, Narda can supply **standard** test data for a nominal fee.

## Environmental Performance for Selected Passive Products\*

Parameter	Specification
Operating Temperature	-54 to +105°C
Storage Temperature	-55 to +125°C
Humidity	Per MIL-STD-202F, Method 103B, Condition B (96 hours at 95% R.H.)
Shock	Per MIL-STD-202F, Method 213B, Condition J (30G, 11 msec)
Altitude	Per MIL-STD-202F, Method 105G, Condition B (50,000 ft)
Vibration	Per MIL-STD-202F, Method 204D, Condition B (.06" double amplitude or 15G, whichever is less)
Thermal Shock	Per MIL-STD-202F, Method 107D, Condition A (5 cycles)

**\*Applicable to: Stripline Directional Couplers, Attenuators, Power Dividers**

Note: This is an exclusive listing. Where otherwise noted in the catalog, the above environmental performance may not apply. Not applicable for those products designed for commercial applications. Many of our catalog off-the-shelf (COTS) products have the ability to withstand considerably more stringent environments. If you have special environmental requirements, please contact the Sales Department at Narda.